

Forest Ridge Elementary School



Welcome to 2nd Grade
Back to School Night!!!

Second Grade Team

Kristin Anzures- Teacher

Maura Burke- Teacher

Katie Leser- Teacher (Team Leader)

Kyron Walker - Towson Intern

Michelle Robinson-Teacher

Yo Seob Kim - Towson Intern

Carol Spaulding- Para Educator

Donna Tiffey -Teacher

Dan White - Teacher



Second Grade Team's Specialists

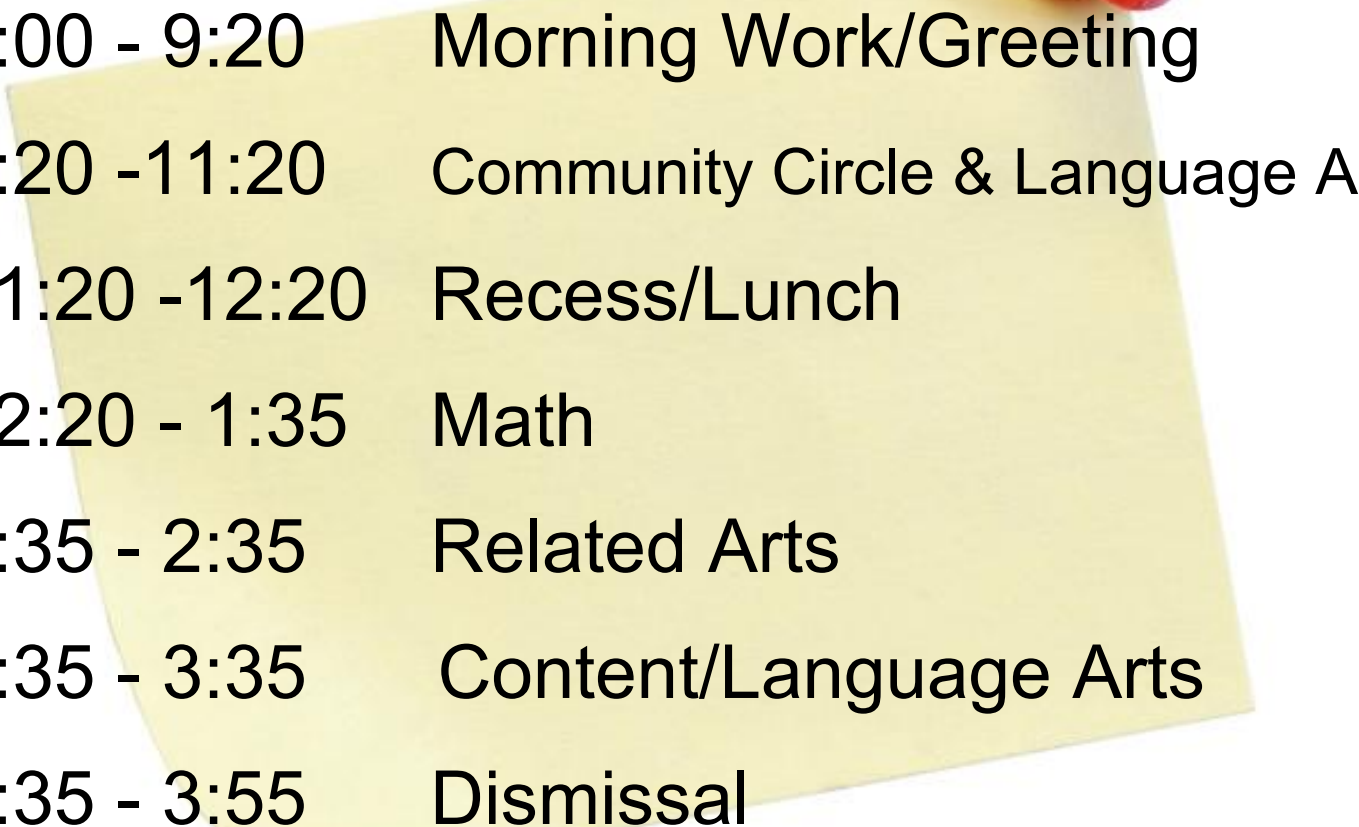
Jason Cook, Holli Hill & Bailey Green- Special Education Teachers

Barbara Kiegler- ESOL Teacher

Kim Clawson- GT Teacher

Matthew Vaughn-Smith/Nikia Darden- Reading Specialist

Let's take a look at the schedule...



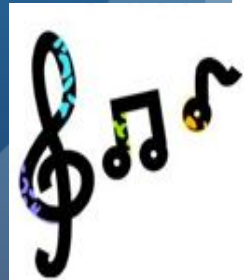
9:00 - 9:20	Morning Work/Greeting
9:20 - 11:20	Community Circle & Language Arts
11:20 - 12:20	Recess/Lunch
12:20 - 1:35	Math
1:35 - 2:35	Related Arts
2:35 - 3:35	Content/Language Arts
3:35 - 3:55	Dismissal



Related Arts



Monday- Music & PE
Tuesday- PE
Wednesday- Media
Thursday - Art
Friday- Music



F.R.E.S.

Focus. Respect. Effort. Safety

Classroom PBIS:

- Class Marble Jar
- Eagle Eggs
(menu)

Lunch



Lunch cost is \$2.75. Milk cost is \$0.50 (if bought separately), Salad Bar is included with lunch but is also available a la carte for \$1.75.

To pay for lunch, cash can be brought to school or you can put funds on POS via the HCPSS website. If your child comes in with money, please put it in a plastic bag with their name on it.



Attendance - Policy 9010

Doors open at 9:00. Parents are required to stop by the office to receive a tardy slip for their child if they arrive after 9:15.

Students must bring a dated note after returning from an absence in order for it to be considered a lawful absence. Students may only make up work if the absence is excused.

September						
Sun	Mon	Tue	Wed	Thu	Fri	Sat
	1	2	3	4	5	6
7	8	9	10	11	12	13
14	15	16	17	18	19	20
21	22	23	24	25	26	27
28	29	30				

Phases of the moon: 2: 0 8: 0 15: 0 24: ●

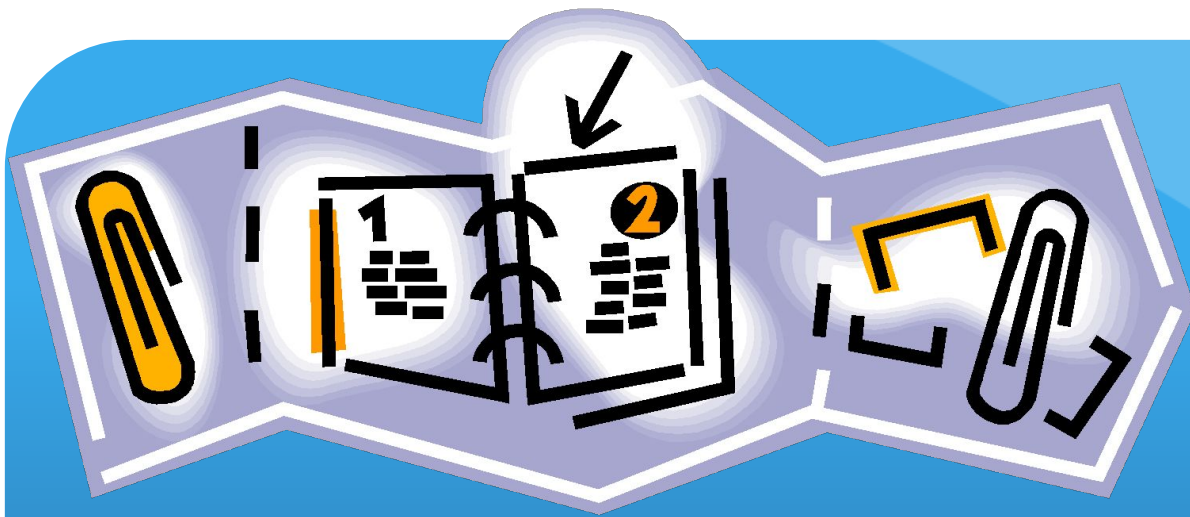
Emergency Information



To ensure we can reach you, it is vital that your child's emergency information is filled out and updated throughout the year on Family File.

In the case of an emergency, it is imperative that we know how your child will be getting home if an early dismissal is necessary.





Homework:

Our formal homework program will begin on Monday, **Sept. 25th**.

Team 2 will follow the HCPSS guidelines for homework. Second graders should be completing a total of 20 minutes of homework a night.

Each student will receive a reading log and a math activity sheet. They should be reading at least 20 minutes on Monday and Wednesday and choosing a math choice board activity Tuesday and Thursday. Reading logs and math activity sheets should be turned in each week on Friday.

Eagle Egg Calendar

Forest Ridge continues to send home a daily calendar where each student records their behavior for the day.

In order to increase communication between the teacher and parent, the calendar is to be signed and returned each day. This will also be in your child's **Take Home** folder every day.

The image shows a 'September Calendar' form. At the top, there are four columns with instructions for recording behavior: 'Good', 'Needs Improvement', 'Needs Attention', and 'Needs Help'. Below these is a cartoon eagle character and a section for '5, 7 or 8 Mornings' with a 'Cool Down Time and/or Reflection Form' and 'WELL or OOR' options. The main part of the form is a grid for the month of September, with each day containing a small eagle icon for tracking.

Grading Policy

In second grade students are assessed for both academics and effort. A letter should have come home regarding the details.

Academic Marks

- I** - I got it!
· (Independent)

- W** - With adult help I can
· do it
· (With Assistance)

- N** - Needs more learning
· and practice
· (Not Apparent at this time)

Effort Grades

- 1** - Excellent, your best
· effort

- 2** - You tried a little, you
· may have needed . . .
· reminders

- 3** - Please give better
· effort

Attention Parent Volunteers!

- If you would like to volunteer please email me with your availability. :)
- All volunteers must complete an online module...link is on FRES website.

Reminders Update with your info

- **Label** all coats, backpacks, lunchboxes, etc.
- Please check your child's **Take Home folder** each night. Look for FRES papers on every day.
- Eagle Egg Calendar remains inside **Take Home Folder**.
- Remember to check your child's lunch account to ensure there are sufficient funds.
- Open communication- written note, email, phone call
 - maura_burke@hcpss.org
 - 410-880-5950

Thank you for attending Back to School Night!

**We look forward to a
year of
collaboration and
success!**

